

India – Go Slow ... in Tiger Country

Naturetrek Tour Itinerary

Outline itinerary

Day 1	Depart London.
Day 2/3	Delhi.
Day 4/9	Satpura National Park.
Day 10	Delhi.
Day 11	Fly London.

Bori Wildlife Sanctuary extension

Day 10/12	Bori Wildlife Sanctuary.
Day 13	Delhi.
Day 14	Fly London.

Dates and costs

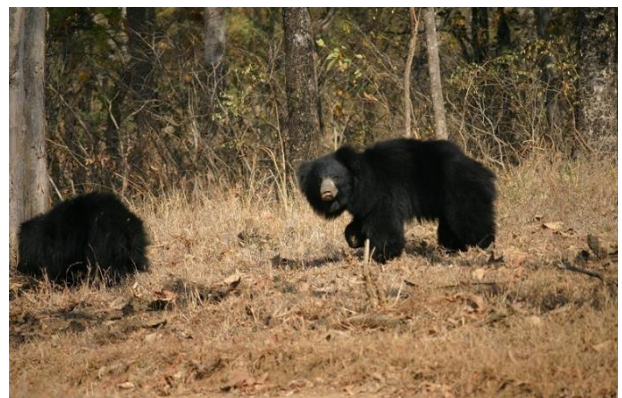
See next page for a complete list

Single room supplement

£895 (Extension: £395)

Focus

Mammals, birds and elements of culture



From top: Leopard, Satpura National Park & Sloth Bears



Naturetrek Mingledown Barn Wolf's Lane Chawton Alton Hampshire GU34 3HJ UK

T: +44 (0)1962 733051

E: info@naturetrek.co.uk

W: www.naturetrek.co.uk

Departures

2020

Sunday 1st November 2020 – Wednesday 11th November 2020	Cost: £3,295
Bori Extension: Tuesday 10th November – Saturday 14th November 2020	Cost: £995

2021

Sunday 17th January – Wednesday 27th January 2021	Cost: £3,295
Bori Extension: Tuesday 26th January – Saturday 30th January 2021	Cost: £995

Sunday 7th November – Wednesday 17th November 2021	Cost: £3,295
Bori Extension: Tuesday 16th November – Saturday 20th November 2021	Cost: £995

2022

Sunday 16th January – Wednesday 26th January 2022	Cost: £3,495
Bori Extension: Tuesday 25th January – Saturday 29th January 2022	Cost: £1,045

Sunday 6th November – Wednesday 16th November 2022	Cost: £3,495
Bori Extension: Tuesday 15th November – Saturday 19th November 2022	Cost: £1,045

Highlights

- A single-centre holiday.
- Direct international flights.
- Comfortable hotels of high quality with swimming pool.
- No long drives (Bhopal to Satpura is only 3-hour drive).
- One 3 to 4 hours wildlife activity each day at Satpura.
- All excursions are optional.
- All-inclusive cost (except drinks & laundry).
- Expertly escorted by an Indian Naturetrek naturalist.
- Top tip: stay longer in India by booking an extension to Bori (only two hours from Satpura).



Reni Pani Jungle Lodge



Reni Pani Jungle Lodge



Reni Pani Jungle Lodge



Reni Pani Jungle Lodge



Leopard



Sloth Bear

Introduction

An 11-day holiday to the most scenic and peaceful of Central India's Tiger Reserves, the little-known Satpura National Park, in search of a classic selection of birds and mammals, including Leopard, Sloth Bear, Asian Wild Dog, Gaur and Indian Giant Squirrel. An optional extension to stay an extra three nights at Satpura is available.

Satpura National Park is one of the most spectacular and rewarding of India's Tiger Reserves. It is little-known and attracts relatively few visitors, having only a handful tourist lodges.

Mammalian highlights during a visit to Satpura are likely to include Leopard, Sloth Bear, Gaur, Asian Wild Dog and Indian Giant Squirrel, while birds such as Indian Skimmer, Bar-headed Goose, Grey Junglefowl, both Red and Painted Spurfowl, hornbills, babblers and bee-eaters are among its avian specialities. As well as traditional jeep safaris in Satpura, walking safaris are permitted in designated areas of the park, and you can explore the shores and inlets of Tawa reservoir by boat or canoe. We stay in a superb wildlife eco-lodge during our visit to Satpura and for those who wish to stay longer can take an optional extension to stay the three nights at Bori Wildlife Sanctuary, which is only a couple of hours drive from Satpura National Park.



Dusk at Satpura National Park

Day 1

In Flight

We depart from London on direct British Airways scheduled flight to Delhi at 1930. We will be in flight overnight.

Day 2

Delhi

We arrive in the morning at 0910 and transfer to our centrally located 5-star hotel. Our stay in Delhi for this holiday is usually at the 5-star hotel, The Claridges for a convenient access to the heart of Delhi, (we cannot guarantee a particular hotel, but always endeavor to book one of a high standard not far from the city centre). Built in 1952, The Claridges remains one of New Delhi's most iconic hotels till date. A perfect amalgamation of elegance and contemporary luxury, it is located in close proximity to the Capital's bustling commercial and cultural centers. Long ago, the plush lawns of The Claridges Garden used to be India's first Prime Minister Mr. Nehru's favourite spot for an evening tea. Here, you will find yourself in the most stunning stretch of Lutyen's Delhi, surrounded by a classic



blend of colonial charm and modern amenities. The Hotel offers exquisitely appointed rooms, an array of celebrated dining options, as well as dedicated leisure and business facilities. It is also equipped with a delightful temperature-controlled swimming pool, complete with sun decks, cabanas, loungers and a bar, where you can savour exotic cocktails, amidst uplifting music and ambient lighting! Surrounded with expansive lawns, the Hotel is designed to leave nothing wanting. With truly Indian warmth and service, it is the very best Delhi has to offer.

The middle part of the day will be free, allowing you time to just relax and recover after your flight.

Day 3

Delhi

In the morning visit the Old Delhi to see some of its famous sights, such as the Red Fort (built by the Emperor Shah Jehan – the builder of Taj Mahal), the Jama Masjid mosque with its tapering minarets and wonderful marble domes, or Chandni Chowk (Old Delhi's business nerve center). We will also enjoy experiencing the hustle-bustle of everyday Indian life and the chattering voices all around us. Old Delhi pulses with the energy, colour and crowded bazaars, and its maze of narrow lanes twist and turn between tall, leaning houses full of the sights, sounds and aromas of the Indian subcontinent.

The afternoon is free, allowing you time to relax at the hotel.

Day 4

Bhopal – Satpura National Park

In the early morning, we will transfer to Delhi airport for an early flight to Bhopal, in the state of Madhya Pradesh. On arrival at Bhopal Airport, we will transfer by car (a 3-hour drive) to Satpura National Park. On arrival at Satpura we will check in the Reni Pani Jungle Lodge for six nights.

Day 5 – 9

Satpura – Reni Pani Jungle Lodge

In the rugged heart of India lies one of the most spectacular and rewarding of tiger reserves, Satpura National Park. A haven for wildlife, thankfully it is little known and attracts relatively few visitors, having only a handful of tourist lodges. Yet it is one of the key players in the chain of central Indian Tiger Reserves designed to protect one of India's most extensive tiger landscapes. Satpura is, quite simply, classic tiger country. Here, open woodland, dense forest and grassy meadows rise from the shores of the Tawa reservoir in a series of hills, plateaux and sheer red sandstone cliffs to the Pachmarhi plateau and the peak of Dhoopgarh – the highest point of Central India. It is a stunningly beautiful landscape – gnarled, eroded



Indian Skimmers



Blackbuck

and fissured, with plunging gorges, rushing streams, ruined temples, ancient cave art and stone-age rock paintings, plus a wealth of bio-diversity unmatched in central India. Indeed it is thought that the Satpura Hills once formed the montane corridor between the eastern Himalaya and the Western Ghats before the softer rock on either side of Pachmarhi eroded to leave an isolated 'highland island' supporting many species of plants and animals that have long since disappeared elsewhere in central India. Indian Giant Squirrels and Indian Mouse-deer, for example, still occur, and the skies are often patrolled by Black Eagles and Mountain Hawk-eagles.

With such a range of habitats and altitudes, Satpura offers a wealth of wildlife viewing that is amongst the best in India. Nowhere else are Gaur (the giant Asian bison), the much sought-after Sloth Bear and the elusive Asian Wild Dog so abundant and there is a reasonably chance to see. These species, together with the beautiful Indian Giant Squirrel and the Leopard (which is relatively common here), make up Satpura's 'big five'. Sambar, Chital, Muntjac, Nilgai, Blackbuck, Wild Boar, Rhesus Macaques and Common Langurs, Marsh

Mugger Crocodiles, and even the elusive Chousingha, may also be seen.

What we hope you will *not* see here is a Tiger! It is true, there are plenty of them in Satpura (at least 40 within its 1,503 square kilometres), but these are wild Tigers – fearful and wary of you. They are not habituated to man, as the Tigers of Ranthambore, Tadoda, Kanha and Bandhavgarh have become. They will not stroll amongst your jeeps, but they will watch you from afar, and endeavour to avoid you. At least, that is what we hope; for once Satpura's Tigers lose their natural shyness, this fabulous tiger reserve will be swamped with tourists, and the tranquillity of this most spectacular of tiger reserves will be lost. So, if you should be so lucky as to see a Tiger here, enjoy a rare and natural sighting and keep it to yourself!

The bird life near our lodge is magnificent and includes such exciting species as Black eagle, Rufous bellied eagle, Malabar pied hornbills, Shahin falcons, Bonelli's eagle, various species of harriers and an exciting range of smaller birds. The waters of the Tawa Dam are suitable habitat for a range of waterfowl like Ruddy Shelduck and Bar-headed Geese along with terns and kingfishers. But there is so much more that is special about Satpura. Here, unlike in any other tiger reserve of north or central India, you may walk in designated areas of the park, and truly absorb the sounds, sights, smells, signs, tracks, etc of so thrilling an environment as 'Tiger country'.

Here you may explore the shores and inlets of Tawa reservoir by boat or canoe, paddled by local fishermen, in search of a rich spectacle of waterbirds and other wetland wildlife and with just 12 jeeps currently permitted to enter the park at any time, game drives in Satpura will be as rewarding and enjoyable as they get!

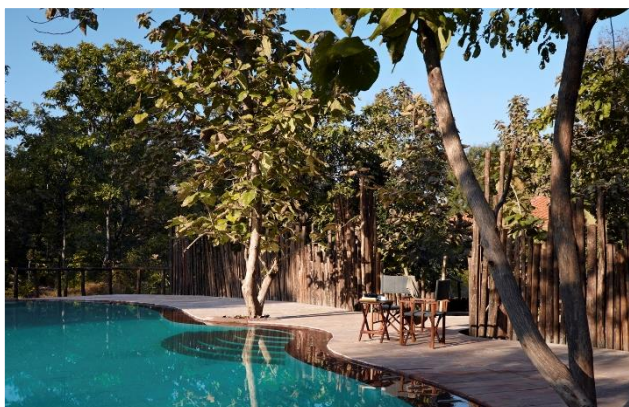


Gaur

The Reni Pani Jungle Lodge is an exquisitely designed conservation and wildlife focused lodge located close to the Satpura National Park and Tiger Reserve. The camp features 12 luxury cottages and 4 luxury tents encompassing 3 distinct structural designs, a cosy central meeting place called the Gol Ghar and a jungle pool located along its seasonal nullah. The lodge is spread over 30 acres of striking forest and features exactly what a nature lover would want, magnificent trees, a sprawling meadow, a seasonal nullah, uneven yet beautiful topography and water holes that attract several species of birds and animals.



Reni Pani Jungle Lodge



While our time at Reni Pani, we will be taking four morning game drives and two afternoon game drives, however, you may choose an optional wildlife excursion done by boat or on foot; or you could relax, potter or swim at the lodge. You could also choose to take an optional night drive, outside the park, to observe the nocturnal life prevalent in the area.

Day 10

Delhi

After spending six memorable nights in Satpura we drive for three hours to Bhopal Airport, visiting the 10,000-year-old rock shelters of Bhimbetka (without a cultural guide) en route. The flight departs to Delhi at 9.10pm. We arrive in Delhi at 10.40pm and transfer to our hotel located close to the airport. Our stay in Delhi for this visit will



be a 5-star hotel, usually The Pullman New Delhi for a convenient access to the Delhi airport, (we cannot guarantee a particular hotel, but always endeavor to book one of a high standard not far from the airport). The hotel features an array of eclectic and exciting eateries. Whether you're looking for a quick bite while you're on the go or a comfortable setting in which to savour a meal, tantalizing options, are at hand. With a varied variety

of three restaurants and lounges at Pullman, you can indulge in different Asian cuisines. We may also make use of its facilities, which include a pool and a spa and health centre before the next phase of our journey. Our stay in this comfortable hotel is well deserved before a long flight to London! If we do not stay at The Pullman, a hotel offering an equivalent standard of rooms and service will be used.

Day 11

Fly London

We transfer to Delhi airport to catch a British Airways mid-morning flight to London. We are due to arrive in London by afternoon.

NB. Please note that the itinerary offers our planned programme of excursions. However, adverse weather and other local considerations can necessitate some reordering of the programme during the course of the tour, though this will always be done to maximise best use of the time and weather conditions available.

Bori Wildlife Sanctuary extension

The Bori Wildlife Sanctuary is the oldest protected area in India. This ancient forest was notified as a sanctuary in 1865. The Bori forest lies to the South of Satpura National Park and to the West of the Pachmarhi Sanctuary. These three together form the Pachmarhi Biosphere Reserve and Satpura Tiger Reserve, one of largest and most biodiverse landscapes in Central India. With the recent and very successful voluntary village relocation programs, the Bori Sanctuary has emerged as one of the most exciting tiger habitats in Central India. The meadows that have been formed as a result of this relocation exercise are fast emerging as great areas for herbivore repopulation. This repopulation phenomena has also enabled a revival of carnivore population, especially of Tiger and Wild Dog. The Bori sanctuary is also home to a diverse range of classic Central Indian wildlife including Sloth Bear, Leopard, Wild Dog, Giant Squirrel and Gaur. Common herbivores like Gaur, Sambar, Spotted Deer and Wild Boar are in abundance here.

The Bori Wilderness Lodge is your gateway to the exciting Bori Sanctuary. Located a couple of kilometres away from the park gate, the lodge is built on a 7.5 acre farmland estate close to Dhapada village. The lodge features eight well-appointed rooms with en-suite facilities, an infinity plunge pool, a spa, indoor and outdoor dining and a library. The lodge will have best in class naturalist guides who will interpret the wildlife of the Bori Sanctuary. Since Bori Wilderness Lodge, will be the first wildlife lodge in the area the safari activities will have a fair bit of exclusivity.

(The minimum number of people required to run this extension is five; however, we may decide to operate it with fewer people, at our discretion, with local guides.)

Day 10 – 12

Bori Wilderness Lodge

Post an early lunch, you will leave Reni Pani Jungle Lodge to the boat jetty and take two and a half hour boat ride to the Tawa reservoir, where the transfer vehicles will meet you and then take you to the Bori Wilderness Lodge. The drive time from Tawa Reservoir to Bori Wilderness Lodge is approximately one and a half hour. In the evening you will settle into the lodge and have an early dinner



Indian Wild Dogs (Dhole)

We will enjoy 3 nights at Bori Wilderness Lodge with one wildlife excursion daily.



Day 13

Delhi

After spending three additional nights in Bori we drive for five hours to Bhopal Airport, visiting the 10,000- year-old rock shelters of Bhimbetka (without a cultural guide) en route. The flight departs to Delhi at 9.10pm. We arrive in Delhi at 10.40pm and transfer to our hotel located close to the airport. Our stay in Delhi for this visit will be a 5-star hotel, usually The Pullman New Delhi Airport Hotel for a convenient access to the Delhi airport. The hotel features an array of eclectic and exciting eateries. Whether you're looking for a quick bite while you're on the go or a comfortable setting in which to savour a meal, tantalizing options, are at hand. With a varied variety of

restaurants and lounges at The Pullman, you can indulge in different Asian cuisines. We may also make use of its facilities, which include a pool and a spa and health centre before the next phase of our journey. Our stay in this comfortable hotel is well deserved before a long flight to London! If we do not stay at The Pullman, a hotel offering an equivalent standard of rooms and service will be used.



Day 14

Fly London

We transfer to Delhi airport to catch a British Airways mid-morning flight to London. We are due to arrive in London by afternoon.

Grading

This is a mammal and birdwatching tour, and accordingly the walking is graded A (easy). Unlike any other wildlife tour, it focuses on a lengthy study of one National Park, and avoids the tiring travelling that is a necessary component of some more typical wildlife tours in India which journey to one park after another.

Clothing

A separate clothing list will be sent to you on booking. Please inspect it thoroughly.



Black-hooded Oriole

Inclusions / Exclusions

The following costs are included in the price of the holiday:

- International and domestic flights in economy class.
- Full board accommodation throughout (i.e. breakfast, lunch and dinner). A 5-star hotel in Delhi, and a fabulous wildlife lodge in Satpura. All rooms have private facilities.
- All transport and guiding.
- All wildlife excursions, park fees and reserve entry fees.

The following costs are **not** included and should be budgeted for:

- Online visa (currently US\$40 plus the bank transaction charges of 2.5%).
- Drinks (though most lodges in the national parks provide boiled drinking water or a bottle of water with their compliments).
- Discretionary tipping (leaders and drivers). During the course of your holiday you will receive periodic assistance from a wide variety of enthusiastic, friendly and helpful local guides, jeep drivers, trackers, hotel porters, waiters and other local people. The tipping of these individuals will be handled by your tour leader(s) and its cost is included within the price of your holiday.
- Any other personal spending e.g. souvenirs, laundry, camera fees. In Satpura camera fees is included.

Checklist & Previous Tour Reports

Where available, these are automatically provided on booking, and will gladly be sent to you before, if you wish for a more detailed preview.

National Parks remain closed to public access on Wednesday afternoons

The National Parks Authority for Madhya Pradesh have announced that all National Parks in the State will remain closed to public access on Wednesday until further notice. This order will affect Pench, Kanha, Bandhavgarh, Satpura and Panna Reserves. The inconvenience caused to Naturetrek tour participants is regretted but unfortunately there is nothing we can do to facilitate entry during these closures.

Flights

We use the direct scheduled service of British Airways for most of our tours to India from London Heathrow Terminal 5 because they offer an excellent all-round service (including connecting departures from most of the regional airport, though such departures from regional airports will be subject to an additional charge of around £150).

If you would prefer to travel World Travellers Plus (normally available at a supplement charge of around **£695**) or Business (normally available at a supplement charge of around **£2,595**) or if you would prefer to travel from regional airports, please let us know at the time of booking so that we can make the necessary arrangements.

Receive our e-newsletter

Join the Naturetrek e-mailing list and be the first to hear about new tours, additional departures, new dates, tour reports and special offers. Visit www.naturetrek.co.uk to sign up.

How to book your place

In order to book your place on this holiday, please give us a call on 01962 733051 with a credit or debit card, book online at www.naturetrek.co.uk, or alternatively complete and post the booking form at the back of our main Naturetrek brochure, together with a deposit of 20% of the holiday cost plus any room supplements if required. If you do not have a copy of the brochure, please call us on 01962 733051 or request one via our website. Please stipulate any special requirements, for example extension requests or connecting/regional flights, at the time of booking.

Please provide us with your passport details (passport number, date of issue, date of expiry and your date of birth) at the time of booking. It is important to note that game safaris will be booked using the same passport details that you provide us at the time of booking, and it will not be possible to change these details once they have been booked. (If you renew your passport after booking, please also bring the old passport whose details you gave us at the time of booking as this will also be required).



Gaur and Spotted Deer

Early Booking on Tiger Tours is essential!

New regulations, including a drastic reduction in the number of jeeps and visitors permitted to enter such popular reserves as Tadoba, Kanha, Pench and Satpura each day, meant that those booking late could often not be accommodated. The simple fact is that the number of beds available at the lodges servicing each of these parks now far exceeds the tiny number of visitors permitted to enter each day. We cannot therefore emphasise strongly enough that early booking is essential. You really do need to book now if you are to secure a place on a tour that visits one of these Tiger Reserves next season.

Highlights of our previous tour

Go Slow – the most amazing way of exploring one of the most exclusive parks in central India.

We had great sightings, the highlights of the tour being one Tiger, two Leopards and one Sloth Bear, plus over 100 species of birds and various species of butterflies.

Some memorable moments of the tour were Sonia, Karen, Dorrit and Barbara having great views of a Giant Squirrel for nearly half an hour, while Vanessa, Janet, Robin and Simon saw a Leopard on the last morning very close to the lodge. The birders enjoyed amazing views of special birds like the Malabar Pied Hornbills. The group also had a Leopard sighting on the first drive in the park, it was lovely to see the camouflage of these spotted cats.

The last game drive gave us most luck with the Tiger sighting and a Bear sighting. The tour certainly lived up to and on occasions exceeded expectations.



Tiger



Sloth Bear



Leopard



Common Rose butterfly